

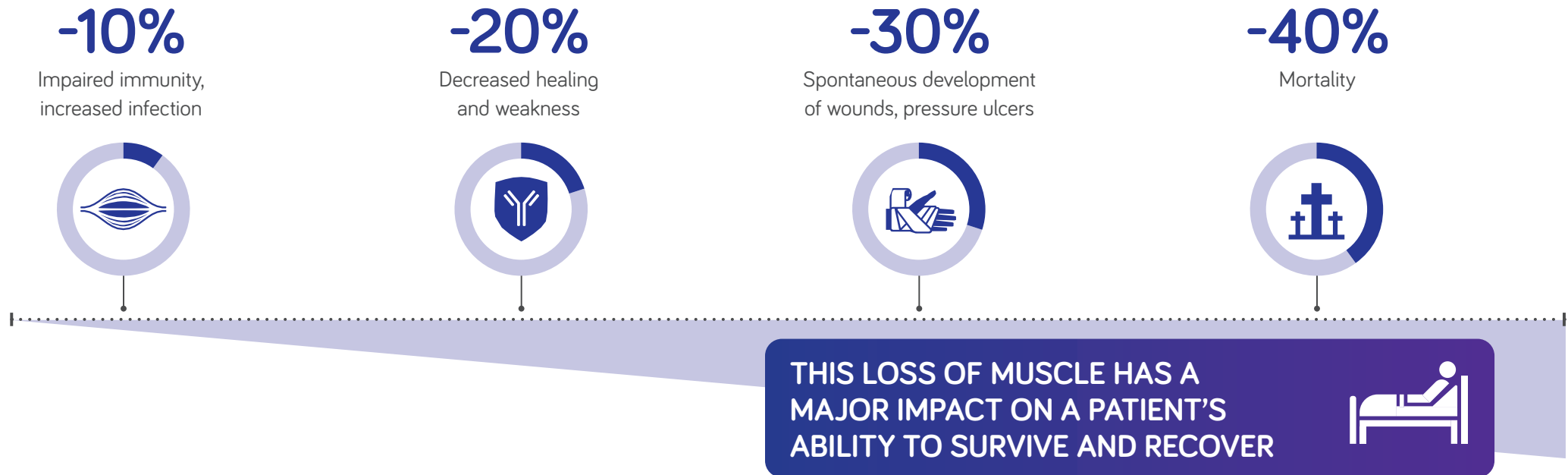


NUTRISON: PROVIDING LIFE SAVING NUTRITION TO CRITICALLY ILL PATIENTS FOR 50 YEARS



MUSCLE WASTING IS THE MOST COMMON COMPLICATION OF CRITICAL ILLNESS, OCCURRING IN UP TO 50% OF PATIENTS¹

The impact of loss of lean body mass can lead to significant effects²:



THE LOSS OF LEAN BODY MASS CAN LEAD TO SIGNIFICANT EFFECTS, IMPACTING RECOVERY AND SURVIVAL^{2,3}

As the number of patients **surviving critical illness in hospital** has risen, there has been an increase in reported:

- Physical and functional disability⁴
- Impairment of quality of life^{1,5,6}
- Mortality at 12 month follow up⁷

To improve functional and QOL outcomes, one essential, low-cost therapeutic strategy that can be rapidly implemented is the optimal provision of nutrition throughout the ICU stay and recovery period⁸.



FOR EVERY DAY THAT A PATIENT SPENDS IN ICU THEY CAN LOSE 1 KG OF LEAN BODY MASS⁹

Muscle weakness, together with muscle wasting is largely the cause of persistent functional limitation one year after discharge from the ICU⁴ in survivors.

NUTRISON PROTEIN INTENSE AND NUTRISON PROTEIN ADVANCE ARE WHOLE PROTEIN TUBE FEEDS WITH HIGH PROTEIN LEVELS THAT FULLY MEET INTERNATIONAL GUIDELINES FOR BOTH ICU AND THE POST ACUTE PHASE¹⁰⁻¹⁴

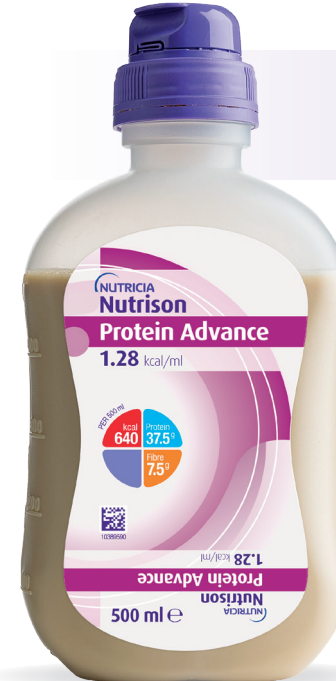


ICU

HOSPITAL WARD



Most suitable product
Nutrison Protein Intense
Energy Protein Target^{10,11}
75%-100% of 25 kcal/kg BW
1.5 g protein/kg BW
Protein Content Formula
10 g protein/100 ml



Most suitable product
Nutrison Protein Advance
Energy Protein Target¹¹⁻¹³
25 - 30 kcal/kg BW
1.5 g protein/kg BW
Protein Content Formula
7.5 g protein/100 ml

NUTRISON: PROVIDING LIFE SAVING NUTRITION TO TUBE FEEDING PATIENTS FOR 50 YEARS

Nutricia offers the optimal nutrition delivery package for the Critical Care patient journey



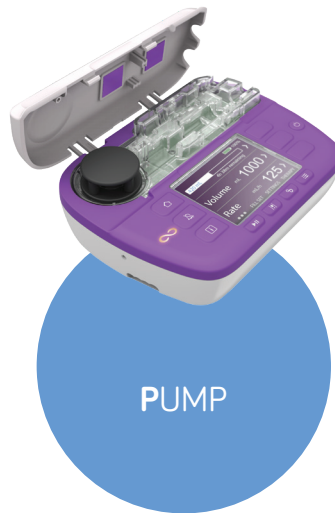
WORLDSTAR WINNER 2020

4 Ps FOR THE BEST RESULTS...



PRODUCTS

Well tolerated high protein products fully in line with international guidelines



PUMP

The new Flocare Infinity III enteral feeding pump: The next generation in customisable enteral feeding



PACKAGING

Multiple* award winning packaging designed for better safety, better usability and a better planet



PERFORMANCE

The NutrI Calculator App calculates the optimal enteral feeding regimen

*Starpack Bronze Star Award, NL Packaging Awards Winner, The Packaging Innovation Awards Diamond Award Finalist, WorldStar Packaging Awards Winner

Food for special medical purposes. For the dietary management of disease related malnutrition in critically ill patients. Must be used under medical supervision.

1. Puthucherry Z. An update on muscle wasting in ICU. SIGNA VITAE. 2017;13(3):30-1

2. Demling RH. Nutrition, Anabolism, and the Wound Healing Process: Epilasty. 2009;9(9e):65-93.

3. Herridge MS, Tansey CM, Matte A, et al. Functional disability 5 years after acute respiratory distress syndrome. N Engl J Med. 2011;364(14):1293-304.

4. Herridge MS, Cheung AM, Tansey CM, et al. One-Year Outcomes in Survivor of the Acute Respiratory Distress Syndrome. The New England Journal of Medicine. 2003;348(8):683-93.

5. Cheung AM, Tansey CM, Tomlinson G, et al. Two-year outcomes, health care use, and costs of survivors of acute respiratory distress syndrome. Am J Respir Crit Care Med. 2006;174(5):538-44.

6. Iwashyna TJ, Ely EW, Smith DM, et al. Long-term cognitive impairment and functional disability among survivors of severe sepsis. JAMA. 2010;304(16):1787-94.

7. Wischmeyer PE. Are we creating survivors...or victims in critical care? Delivering targeted nutrition to improve outcomes. Curr Opin Crit Care. 2016;22(4):297-84.

8. Zanten van ARH, Waele de E, Wischmeyer PE. Nutrition therapy and critical illness: practical guidance for the ICU, post-ICU and long-term convalescence phases. Critical Care. 2019; 23:368.

9. Puthucherry ZA, Rawal J, McPhail M, et al. Acute skeletal muscle wasting in critical illness. JAMA. 2013;310:1591-600.

10. Singer P, Blaser AR, Berger MM, et al. ESPEN guideline on clinical nutrition in the intensive care unit. Clin Nutr. 2019;38(1):48-79.

11. Singer P, Hessey M, Biolo M, et al. Pragmatic approach to nutrition in the ICU. Expert opinion regarding which calorie protein target. Clin Nutr. 2014;33(2):246-51.

12. Weimann A, Braga M, Carli F, et al. ESPEN guideline: Clinical nutrition in surgery. Clin Nutr. 2017;36(3):623-50.

13. Arends J, Bachmann P, Baracos V, et al. ESPEN guidelines on nutrition in cancer patients. Clin Nutr. 2017;36(1):11-48.

14. National Institute for Health and Care Excellence. Nutrition support for adults: oral nutrition support, enteral tube feeding and parenteral [Internet]. [London]: NICE; 2006 (updated 2017 Aug) (Clinical guideline [CG32]). Available from: <https://www.nice.org.uk/guidance/cg32>

